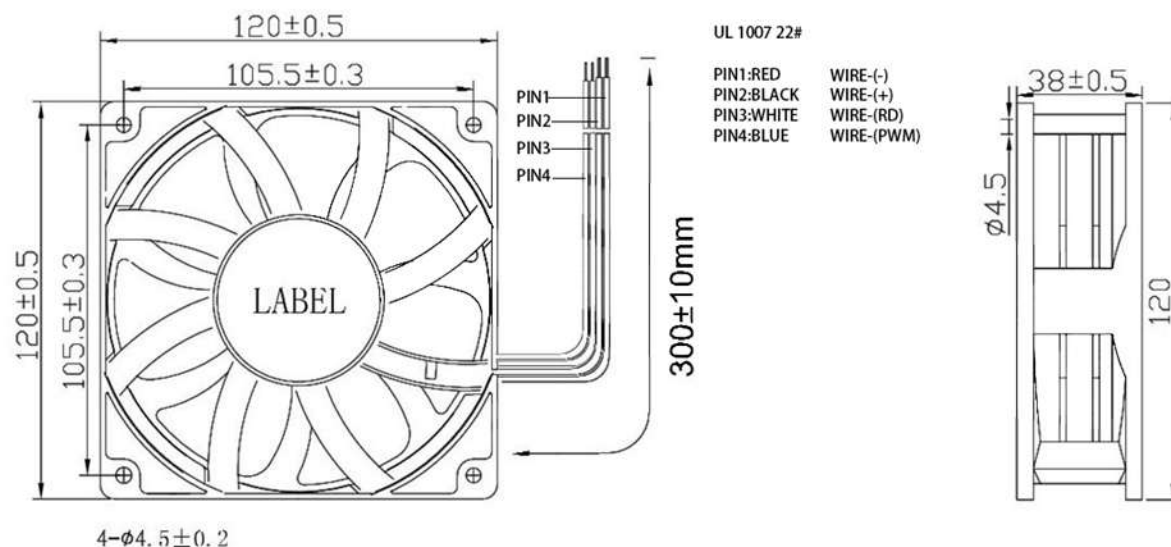


CUSTOMER : DRAWING FOR REFERENCE ONLY

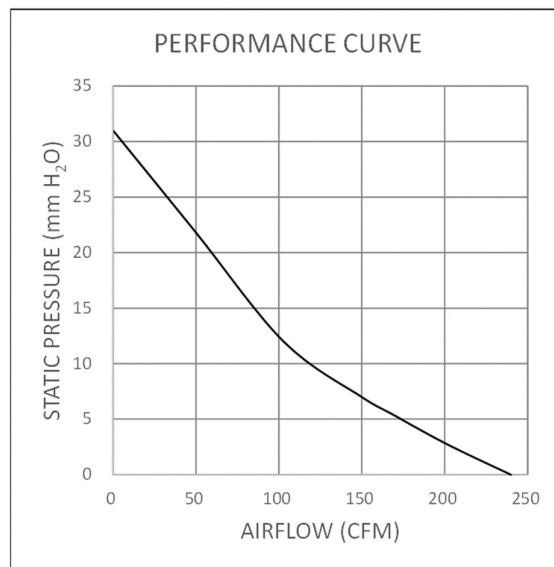
APPLICATION :



ITEM	DESCRIPTION
MOTOR TYPE	BRUSHLESS DC
RATED VOLTAGE (V DC)	12
VOLTAGE RANGE (V DC)	8 ~ 13.5
CURRENT (A) ± 10%	1.60 (MAX)
INPUT POWER (W) ± 10%	19.2
SPEED (RPM) ± 10%	5000
MAX AIR FLOW (CFM)	240
MAX STATIC PRESSURE (mmH ₂ O)	31
NOISE (dB)	61
NO OF BLADES	7
OPERATING TEMP. RANGE	-10°C TO +70°C
LIFE TIME (MTBF)	70,000 Hrs @ 40°C

NOTES :

1. DIELECTRIC STRENGTH : 5mA MAX BETWEEN LEAD WIRE AND FRAME AT 500VAC
2. INSULATION RESISTANCE : MIN 10MΩ BETWEEN LEAD WIRE AND FRAME AT 500VDC
3. REVERSE POLARITY PROTECTION : YES
4. AUTO RESTART FUNCTION : YES
5. LOCKED ROTOR PROTECTION : YES
6. STORAGE TEMP RANGE : -40°C ~ +70°C

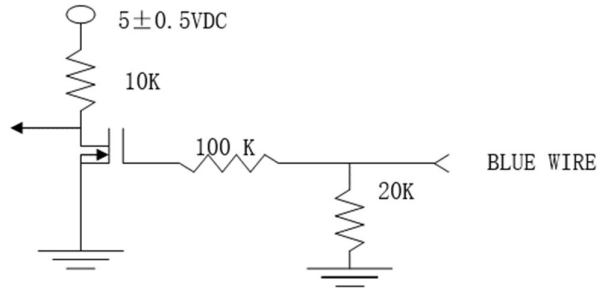


3	BEARING TYPE	2	BALL BEARING	MAINTENANCE FREE
2	IMPELLER	1	PBT (UL94V-0)	BLACK
1	FRAME	1	PBT (UL94V-0)	BLACK
SR. NO.	PART NAME	QTY	MATERIAL	REMARK

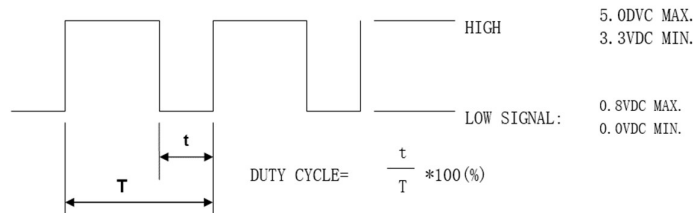
NOMENCLATURE		DC COOLING FAN NIS12038UHB-12VDC-P1		
SCALE : NTS	DATE	PREPARED BY	CHECKED BY	APPROVED BY
UNIT : mm		D KADAM	ASIF	RAJESH
MASS: 305g approx		NISIKI INDIA PRIVATE LIMITED		
DRAWING NUMBER XXXX-XXX-XXX				

PWM SIGNAL

CONTROL CIRCUIT



SIGNAL

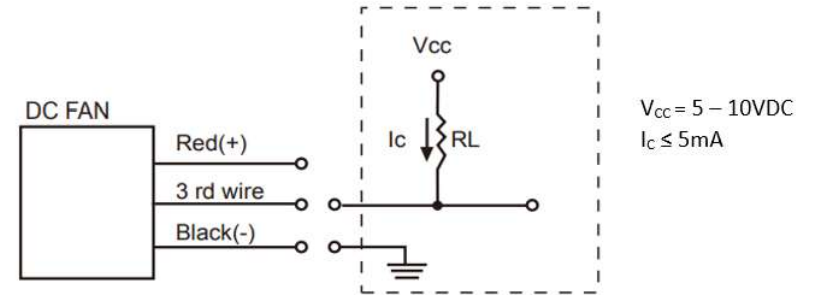


1. THE CONTROL SIGNAL FREQUENCY SHALL BE ABLE 16KHZ~32KHZ.
2. THE PREFERRED OPERATING FREQUENCY IS 25KHZ.
3. AT 100% DUTY CYCLE THE ROTOR WILL SPIN AT MAXIMUM SPEED.
4. AT 0% DUTY CYCLE THE ROTOR WILL STOP.
5. WITH CONTROL SIGNAL LEAD DISCONNECTED FAN WILL SPIN AT MAXIMUM SPEED.
6. AT 25KHZ 3%~5% DUTY CYCLE THE FAN WILL BE ABLE TO START FROM A DEAD STOP.

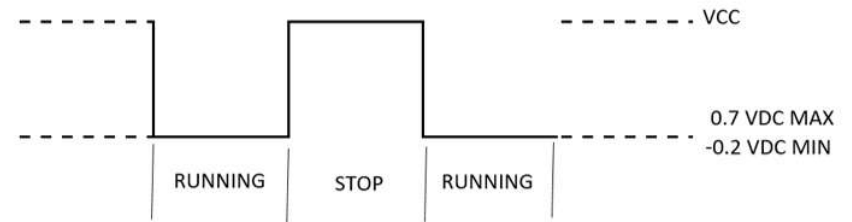
DUTY CYCLE %	SPEED RPM
100	5000 ± 10% REF
50	2900 ± 290 REF
0	0

RD SIGNAL

RD CIRCUIT



RD SIGNAL OUTPUT



NOTE: RD LINE SHOULD NOT TOUCH LEAD WIRE +VE OR -VE

NOMENCLATURE		DC COOLING FAN NIS12038UHB-12VDC-P1		
SCALE : NTS	DATE	PREPARED BY	CHECKED BY	APPROVED BY
UNIT : mm		D KADAM	ASIF	RAJESH
MASS: 305g approx		NISIKI INDIA PRIVATE LIMITED		
DRAWING NUMBER XXXX-XXX-XXX				